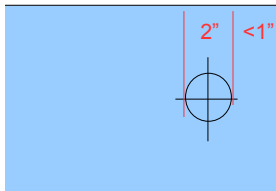


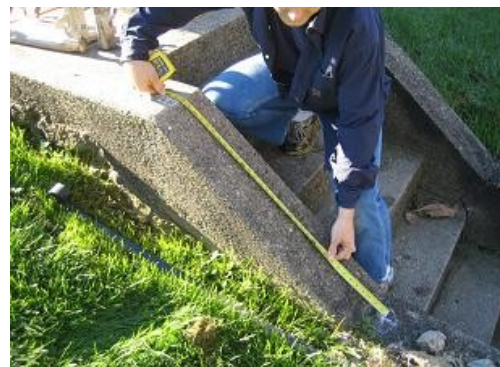
Drill Installation Method. If you want the most professional looking results, this is the method for you. This method requires a core drill or hammer drill with about a 3/8" bit. Using a drill sockets are made in the concrete where the posts can be securely cemented. A core drill can be rented from many hardware and tool rental stores. The hammer drill requires more work, but it will save you the cost of renting a core drill.

Step 1: Mark the spots for the holes.



Drawing a cross hair like this may be helpful

Measure the distance between the tabs on the handrail where the posts connect. Mark that same distance on the steps where the holes will be drilled. The holes must be **at least an inch** away from the edge of the concrete, or you may blow out the hole and damaging your steps! Align your holes as close to the center of each step as possible.

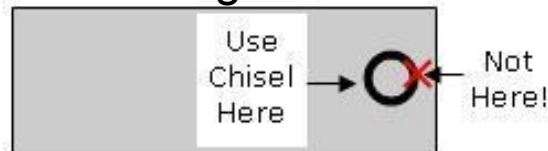


Step 2: Drill the holes.

Drill each hole between 4 and 6 inches deep. Depth is important. If your posts are not deep enough, the railing cannot support the stress of a person losing his balance. Serious injury could occur! Follow all instructions that come with the drill! Once finished remove the plug by lightly tapping with a hammer and chisel on the side away from the step edge! If you tap next to the edge you may blow out the hole. A core drill leaves water in the hole and a muddy residue. Suck out all water with a sponge or vacuum. And clean up all mud before it dries. It can cause discoloration.

Or using a hammer drill with a 3/8 bit, make several holes grouped close together—perhaps 4 to 5 holes. Then use a chisel & hammer to break up the area. Extract the pieces with long needle nose pliers and/or a shop vac. Your holes should be large enough for the post to be completely surrounded with concrete. We recommend a two-inch hole.

Removing the Core



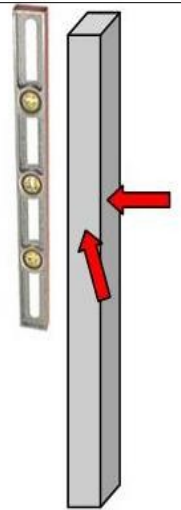
Step 3: Trim the posts to the proper length

When installed the top of you EZ Rail should be 2' 10" above the edge of each step. Measure the depth of *each* hole to see how long each post should be. For each post make the following calculation: 2'10", plus the depth of the hole, minus 1" for the thickness of the rail. For example if the hole is 4 1/2" deep, its post should be 2' 10' + 4 1/2" - 1" which equals 3' 1 1/2" long. A vice and a new hacksaw blade will help you make the cleanest and fastest cut.



Step 4: Position the posts.

Use a level to set the posts vertically. Check two perpendicular sides of each post to ensure it's not leaning forward or sideways. Use clamps and supports to hold this position until the cement hardens.



Step 5: Cement the posts into the holes.

Mix the concrete according to its directions, and pour it into the holes. *Be careful to make sure your posts are straight up and down as the cement hardens.* In some cases it, might be necessary to set one post and then pull on the rail to level the other post(s) before they are cemented. Fill the holes until the cement humps up a bit, then clear the excess with a trowel and sponge.



Your EZ Rail comes sprayed with gray primer. This must be covered with rust-protecting paint before or after installation. We recommend painting after installation to avoid nicks. To help your rail stay beautiful for years to come, sand down rust spots and repaint as needed.

Contact us with any questions Monday -Friday; 7:00 am – 3:00 pm EST.
(412) 221-4488; e-mail: ezrail@verizon.net